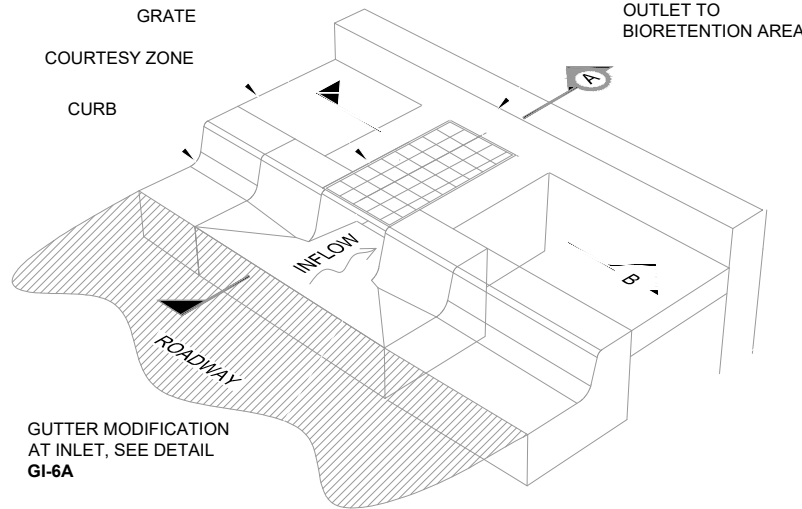
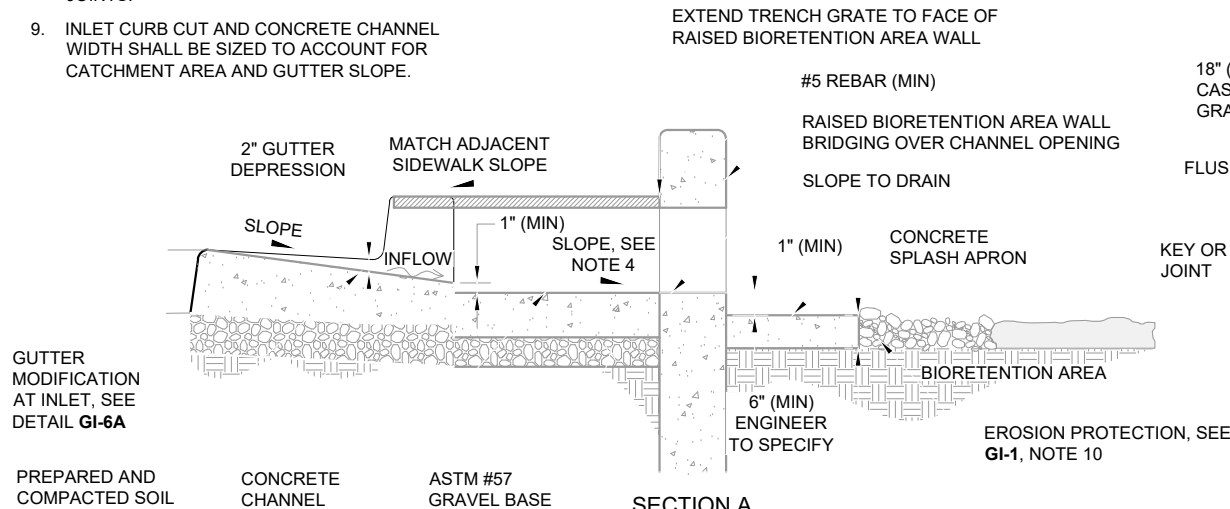
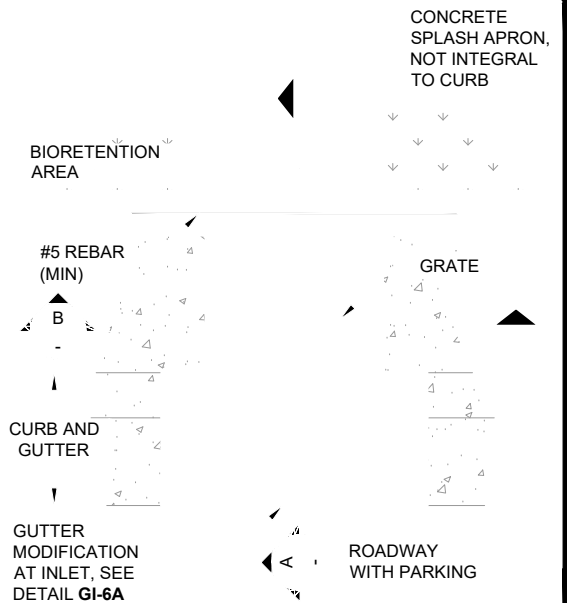


NOTES:

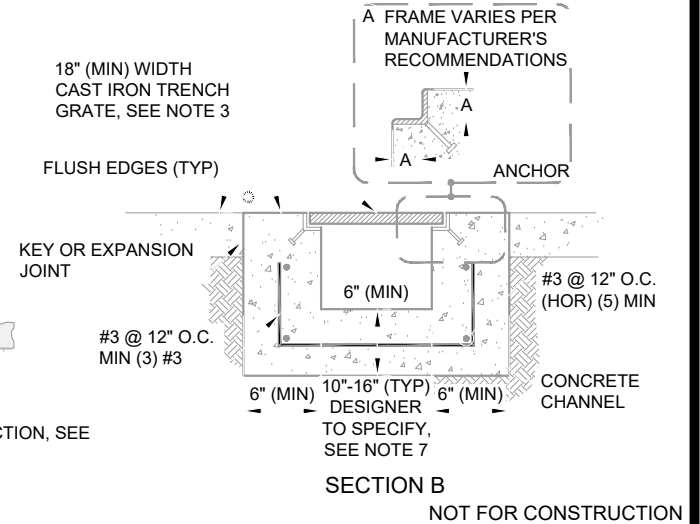
1. REFER TO **GI-1** NOTES FOR GUIDELINES AND CHECKLIST.
2. ALL MATERIAL AND WORKMANSHIP FOR TRENCH DRAIN ASSEMBLY SHALL CONFORM TO LOCAL JURISDICTION STANDARDS.
3. TRENCH DRAIN INLETS SHALL BE ADEQUATELY SIZED, SPACED, AND SLOPED TO MEET HYDRAULIC REQUIREMENTS. SEE NOTE 2 DETAIL **GI-6A** FOR REFERENCE.
4. SLOPE TO PROVIDE AT LEAST 1" DROP OVER LENGTH OF CHANNEL OR A MINIMUM OF 2%, WHICHEVER IS LARGER.
5. ALL TRENCH GRATES SHALL BE REMOVABLE, RATED PER THE ANTICIPATED LOADING, AND BOLTED IN PLACE OR OUTFITTED WITH APPROVED TAMPER-RESISTANT LOCKING MECHANISM, FLUSH OR RECESSED IN GRATE.
6. BOND NEW CURB AND GUTTER TO EXISTING CURB AND GUTTER WITH EPOXY AND DOWEL CONNECTION.
7. HORIZONTAL CONTROL JOINTS SHALL BE PROVIDED EVERY 10' (LINEAR), OR PER MANUFACTURER'S RECOMMENDATIONS.
8. APPLY EPOXY BONDING AGENT AT ALL TRENCH DRAIN CONSTRUCTION COLD JOINTS.
9. INLET CURB CUT AND CONCRETE CHANNEL WIDTH SHALL BE SIZED TO ACCOUNT FOR CATCHMENT AREA AND GUTTER SLOPE.



ISOMETRIC



SECTION A



SECTION B

NOT FOR CONSTRUCTION



GREEN INFRASTRUCTURE
EXAMPLE DETAILS
ALAMEDA COUNTYWIDE CLEAN
WATER PROGRAM

SCALE: NOT TO SCALE
DATE: MAY 11, 2018 REVISED: JUNE 11, 2019
DRAWN BY: K. K. REVISED BY: E.F.
CHECKED BY: A. R.

GI-6B